

Short List of possible Schemes

1) Gillespie Road – entrance to Tannington Terrace



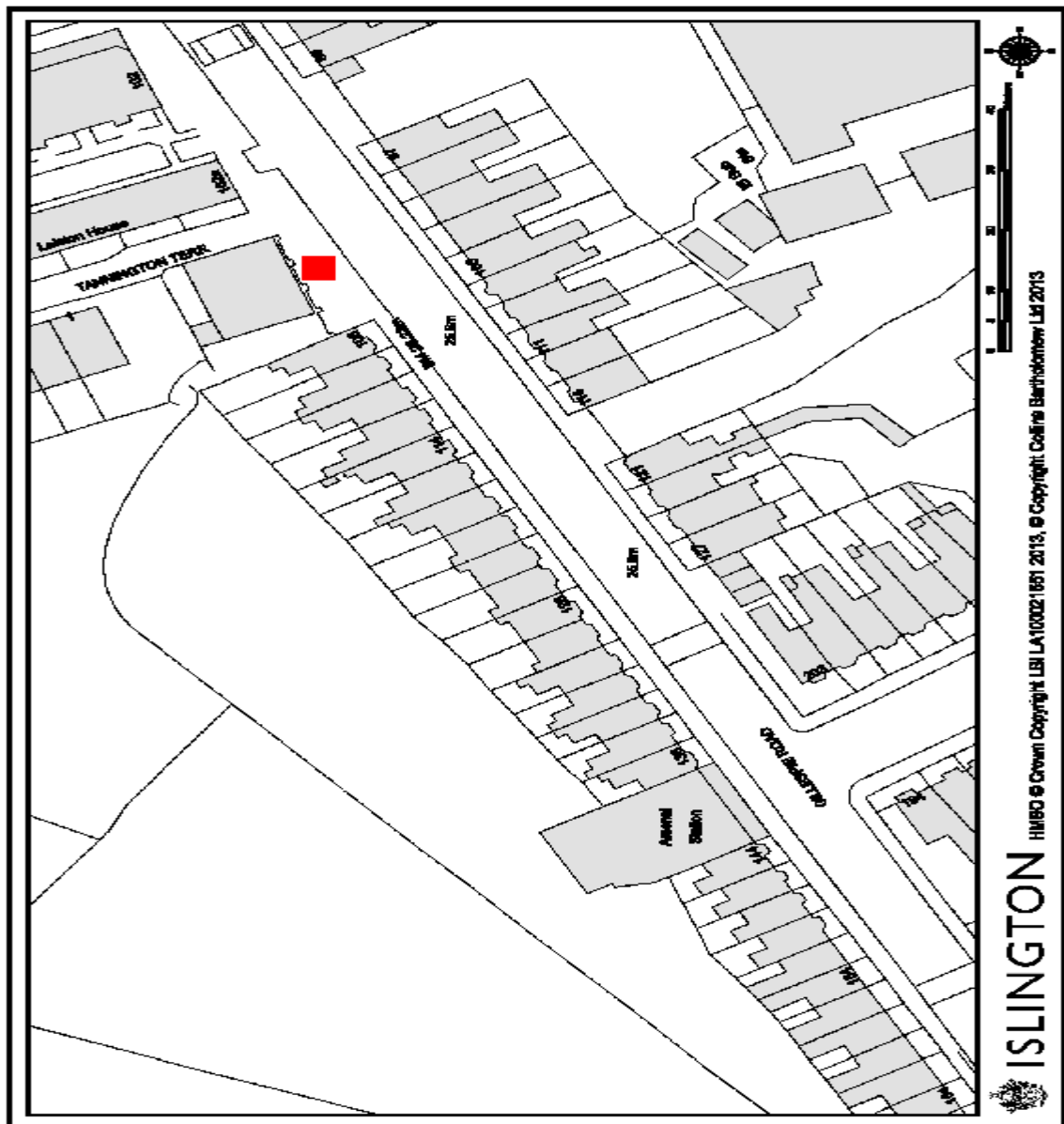
Proposals:

Raise crossover to same level as footway and construct with ASP flags on reinforced concrete.

Benefits: Provides a continuous step free pedestrian walkway for increased pedestrian safety.

Estimated Construction Cost: £5000

2) Gillespie Road by Tannington Terrace



Proposals:

Install cycle stands as possible.

Housing land, will need to secure agreement with housing

Benefits: Good location for cycle stands.

Estimated Construction Cost: £5,000

3) Crossover opposite Drayton Park junction with Elfort Road



Proposals:

Raise crossover to same level as footway and construct with ASP flags on reinforced concrete.

Benefits: Provides a continuous step free pedestrian walkway for increased pedestrian safety.

Estimated Construction Cost: £5000

4) Arsenal Stadium entrance 2 to Box Office



Proposals:

Create a raised 2 metre wide buildout in reinforced materials to match existing footways

Benefits: Large shared priority area with enhanced speed reducing features. Increases pedestrian perception of space. No loss in parking due to presence of existing parking restrictions.

Installation of red blossom trees not costed.

Estimated Construction Cost £50,000

5) Arsenal Stadium entrance 2 to Box Office



Proposals:

Create a raised 2 metre wide buildout in reinforced materials to match existing footways

Benefits: Large shared priority area with enhanced speed reducing features. Increases pedestrian perception of space. No loss in parking due to presence of existing parking restrictions.

Installation of red blossom trees not costed.

Estimated Construction Cost £50,000

6) Drayton Park – Tree Lined Verge



Proposals:

Take up and relay surfacing surrounding existing tree lined verge with resin bonded material to prevent further tree root damage

Benefits: Reduces trip hazards for pedestrians, increases effective available walking space, reduces unsightly cracks and water ingress to further damage the paving.

Estimated Construction Cost £125,000

7) Drayton Park / Aubert Park



Ready for Implementation

Install Pedestrian refuge in Aubert Park
Possible removal of existing roundabout after safety audits are carried out.

Estimated Construction Cost £20,000

8) Drayton Park junction with Whistler Street



Proposals:

Raise two crossovers to same level as footway and construct with ASP flags on reinforced concrete.

Benefits: Provides a continuous step free pedestrian walkway for increased pedestrian safety.

Cost: £12,000

9) Drayton Park mainline station



Proposals:

Construct footway buildout to same level as footway and construct with ASP flags on reinforced concrete.

Benefits: Physically narrows carriageway to help reduce vehicular speeds, Increases pedestrian space. No loss in parking due to presence of existing parking restrictions.

Cost: £30,000

10) 56 - 80 Drayton Park – realignment of cycle lanes



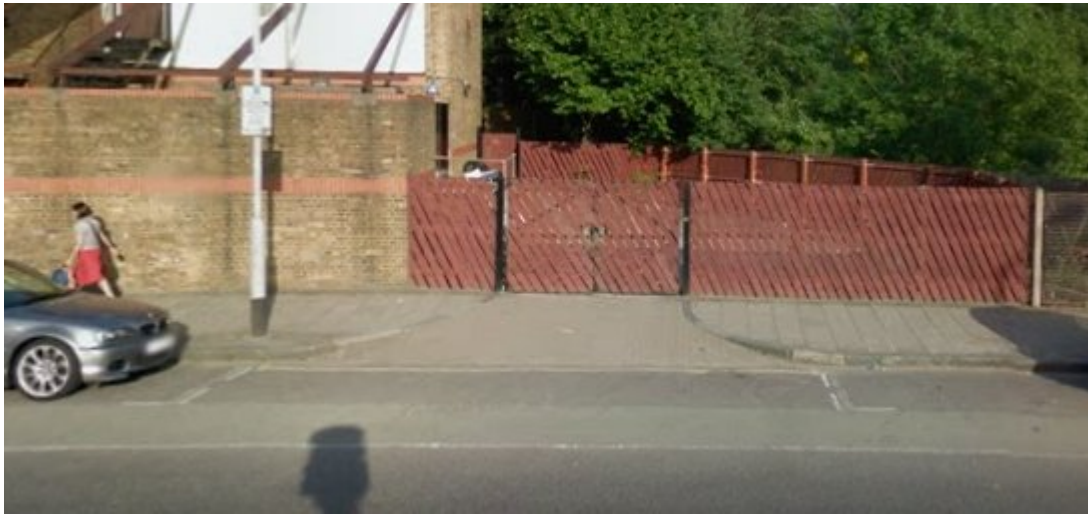
Proposals:

Realign cycle lanes to back of carriageway and upgrade to current LCDS.

Benefits: Facilitation of safer cycle movement, reduced conflicts with motor vehicles and increased pedestrian safety as a result of the associated new zebra crossing

Estimated Construction Cost: £65,000

11) Drayton Park – Crossover opposite mainline station



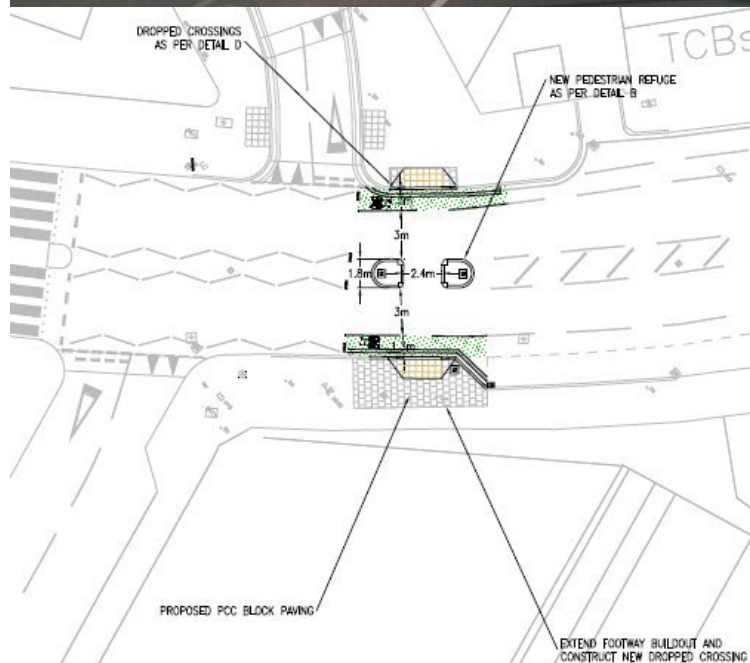
Proposals:

Raise crossover to same level as footway and construct with ASP flags on reinforced concrete.

Benefits: Provides a continuous step free pedestrian walkway for increased pedestrian safety.

Estimated Construction Cost: £5000

12) Drayton Park / Arvon Road pedestrian crossing point / central refuge



Proposals:

Extend existing buildout and construct new central refuge and dedicated pedestrian crossing point

Benefits: Safer crossing point for pedestrians, increased perception of space and reduction in vehicle speeds.

Estimated Construction Cost £20,000

13) Arvon Road



Proposals:

Replace existing tarmac footway with ASP flags in line with current standards. Resurface carriageway.

Benefits: Increases pedestrian comfort and alleviates hazards from existing potholes where the tarmac has worn away

Estimated Construction Cost: £45,000

14) Arvon Road – Drayton Park School



Proposals:

Look into replacing unsightly guardrail with alternatives such as buildouts and trees.

Benefits: Aesthetic improvements to the environment

Estimated Construction Cost: £30,000

15) Arvon Road – Junction with Witherington Road



Proposals:

Create a raised shared space by constructing raised entry treatment in reinforced materials to match existing footways

Benefits: Continuous pedestrian crossing point, speed reduction benefits and an increased pedestrian perception of space

Estimated Construction Costs £25,000

16) Cycle symbols along entire Connect2 Route



Proposals:

Approximately 30 cycle symbols along route to define and provide directions to cyclists.

Benefits: Increase awareness of cyclists of the route.

Estimated Construction Cost: £1,500

17) Quill Street – Gillespie Park



Proposals: Build new ramped access with handrail.

Estimated Construction Cost £20,000.

18) Gillespie Park – Seven Sisters



The possibility of a ramp at the other end of the park by Seven Sisters road has been looked at by Greenspace and not deemed possible due to constraints by network rail and the level gradients being too severe.

We will ensure however that the area is cleaned and tidied. Possibility of Mural or sculpture works at this end.

Estimated Construction Cost 5,000.

19) General repairs to carriageways and pavements in Gillespie Rd, Drayton Park and St Thomas's Road



Proposals:

Estimated Construction Cost £50,000.

